

LEGEND

Tree Inventory

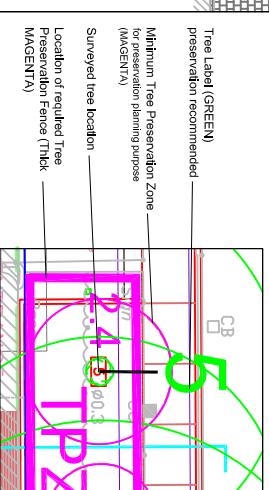
Refer to Table 1 of report dated 1 November 2018, revised 13 February 2019, 9 November 2020, and 3 February 2022 for complete tree inventory information. All trees on and within 30 metres of the subject property were included in the inventory.

Tree Removals

The removal of trees will not be required to accommodate the proposed development.

Tree Preservation

Preservation of all trees will be possible. Trees identified for preservation are indicated with GREEN labels. Tree Preservation Zone (TPZ) circles represent minimum distances for construction and grading near trees, respecting City of Toronto Private Tree By-Law. Refer to Tree Protection Plan Notes for preservation details.



- Tree Label (GREEN) preservation recommended
- Minimum Tree Preservation Zone for preservation planning purpose (MAGENTA)
- Surveyed tree location
- Location of required Tree Preservation Fence (THICK MAGENTA)

TREE PROTECTION PLAN NOTES

- It is the applicant's responsibility to discuss potential impacts to trees located near or within an adjacent residential or other development and to take all reasonable steps to avoid, minimize, or compensate for any such impacts. The applicant may be held responsible through civil action. The applicant should also be required to replace such trees to the satisfaction of Urban Forestry.
- The protection barriers shall be installed to standards as detailed in this document and to the satisfaction of Urban Forestry.
- The protection barriers must be installed using plywood dead hoarding (minimum 19mm or 3/4" thick) or an equivalent approved by Urban Forestry.
- Where required, signs as specified in Section 4, Tree Protection Signs must be attached to all sides of the barrier.
- In the event of construction of any site activity such as site alteration, demolition or construction, the tree protection measures specified on this plan must be installed to satisfaction of Urban Forestry.
- Once all tree-related protection measures have been installed, Urban Forestry staff must be contacted to arrange for a tree-related tree protection inspection. The inspection must be completed within 10 business days of the installation of tree protection to the satisfaction of Urban Forestry.
- When changes to the location of the approved TPZ or equivalent control or when temporary access to the TPZ is proposed, Urban Forestry must be contacted to obtain approval prior to alteration.
- The protection barriers must remain in good condition during construction and must be replaced if disturbed. Including landscaping, and must not be altered, moved or removed without authorization by Urban Forestry.

No construction activities including grade changes, surface treatments or excavation of any kind are permitted within the area identified on the Tree Protection Plan or Site Plan as a minimum tree protection zone (TPZ). No vehicles or equipment is permitted within the TPZ. The area identified as a TPZ must be protected and remain undisturbed at all times.

All additional tree protection requirements, above and beyond the installation of tree protection barriers, must be undertaken or implemented as detailed in the Urban Forestry approved report and/or the approved tree protection plan and to the satisfaction of Urban Forestry.

If the minimum tree protection zone (TPZ) must be reduced to facilitate construction access, the tree protection barriers, must be undertaken or implemented as detailed in the Urban Forestry approved report and/or the approved tree protection plan and to the satisfaction of Urban Forestry.

Any roots or branches indicated on this plan which impede grading, as approved by Urban Forestry, must be pruned by an arborist. All pruning of roots and branches must be done in accordance with good arboricultural practice. Roots that have required approval from Urban Forestry to be pruned must first be supported using a proper pruning cut and methods to ensure the tree's stability. The arborist retained to carry out crown or root pruning must contact Urban Forestry to meet their working days prior to conducting any pruning work.

The applicant/owner shall provide all-by-law regulated trees in the area of construction that have not been approved for removal throughout development works to the satisfaction of Urban Forestry.

Conditions of approval regarding the regulations in the Street Tree By-Law and Street Tree By-Law are a maximum fine of \$100,000 per tree, and/or a Special Fine of \$100,000. This information may be reviewed by the City to stop the concerning activity or conduct to undertake work to complete the construction.

The owner must ensure that the work site is in accordance with the Regulatory Best Construction Act and that no approved tree protection barriers are removed or damaged. The applicant/owner must ensure that the work site is not disturbed by the proposed work to less than 60 hours prior to conducting any approved work.

No.	Issue/Revisions	Date	By
1	Report Submission	1 Nov. 18	KH
2	Report Submission	13 Feb. 19	KH
3	Report Revision	9 Mar. 20	KH
4	Report Revision	3 Feb. 21	KH

Base Data: Spagnol, Van Norderd & Olson Ltd. (topo); Sweeney & Co Architects Inc. (Site plan)

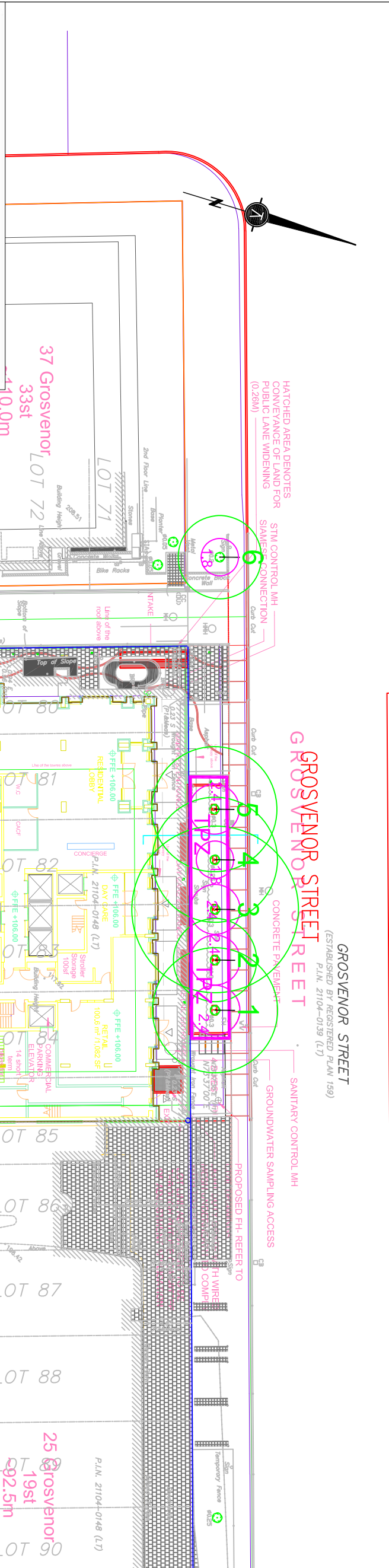
KUNTZ FORESTRY CONSULTING INC.

PO Box 1261 Lakeshore, W. PO
146 Lakeshore Road West
Oakville, ON L6K 0S3
Canada
www.kuntzforestry.ca
www.kuntzconsulting.ca
kuntz@kuntzforestry.ca
consult@kuntzconsulting.ca

Terraplan Landscape Architects
20 Champlain Boulevard, Suite 102
Toronto, ON M3H 2Z1

Project: P1933
Date: 1 November 2018
Scale: 1:400

Existing Conditions, Proposed Site Plan
Tree Inventory & Preservation Plan
Figure 1



Toronto
Parks, Forestry & Recreation

Tree Protection Zone (TPZ)

All construction related activities, including grade alteration, excavation, soil compaction, any materials or equipment storage, disposal of liquid and vehicular traffic are NOT permitted within this TPZ.

This tree protection barrier must remain in good condition and must not be removed or altered without authorization of City of Toronto, Urban Forestry.

Concerns or inquiries regarding this TPZ can be directed to:
311 or 311@toronto.ca

Toronto
Parks, Forestry and Recreation
Urban Forestry
February 2016
Detail TP-1

Tree Protection Barriers

- Tree protection barriers must be constructed with a solid wood frame clad with plywood or approved equivalent. Height of hoarding may be less than 8 ft. to accommodate any branches that may be lower.
- Tree protection barriers for trees situated on the City road allowance where visibility must be maintained shall be constructed with a solid wood frame clad with plywood or approved equivalent. Height of hoarding may be less than 8 ft. to accommodate any branches that may be lower.
- Where some excavate or fill has to be temporarily located near a tree protection barrier, plywood must be used to ensure no material enters the Tree Protection Zone.
- No construction activity, grade changes, surface treatment or excavations of any kind is permitted within the Tree Protection Zone.

Note:
Sediment control fencing shall be installed in locations indicated in an Urban Forestry approved Tree Protection Plan. The sediment control fencing must be installed to Ontario Provincial Standard (OPS) 219.130 heavy duty self fence barrier and to the satisfaction of Urban Forestry. See Detail TP-2.