

LEGEND

Tree Inventory

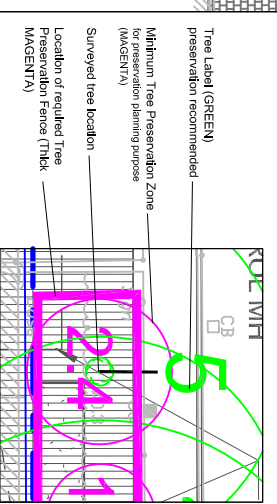
Refer to Table 1 of report dated 1 November 2018, revised 13 February 2019 for complete tree inventory information. All trees on and within six metres of the subject property were included in the inventory.

Tree Removals

The removal of trees will not be required to accommodate the proposed development.

Tree Preservation

Preservation of all trees will be possible. Trees identified for preservation are indicated with GREEN labels. Tree Preservation Zone (TPZ) circles represent minimum distances for construction and grading near trees, respecting City of Toronto Private Tree By-Law. Refer to Tree Protection Plan Notes for preservation details.



TREE PROTECTION PLAN NOTES

- It is the applicant's responsibility to discuss potential impacts to trees located near or directly on proposed or shared boundary lines with their neighbours. Shaded red trees are those for which a preservation plan is required to address such trees to the satisfaction of Urban Forestry.
- The protection barriers shall be installed to standards as detailed in the document and to the satisfaction of Urban Forestry.
- The protection barriers must be installed using plywood (minimum 19mm or 3/4") or an equivalent approved by Urban Forestry.
- Where required, signs as specified in Section 4, Tree Protection Signage must be attached to all sides of the barrier.
- Prior to the commencement of any site activity such as site alteration, demolition or construction, the tree protection measures specified on the plan must be installed to the satisfaction of Urban Forestry.
- Once all tree protection measures have been installed, Urban Forestry staff will be contacted to arrange for an inspection of the site and approval of the tree protection requirements. Photographs that clearly show the relative tree-to-protection shall be provided for Urban Forestry review.
- When changes to the location of the approved TPZ or additional control or where temporary access to the TPZ is required, Urban Forestry must be contacted to obtain approval prior to alterations.
- The protection barriers must remain in place and in good condition during construction and/or site preparation. The protection barriers must be removed or altered without authorization of City of Toronto, Urban Forestry. Penalties for non-compliance will be assessed, revised and submitted by Urban Forestry.

- No construction activities including grade changes, surface treatments or excavation of any kind are permitted within the area identified on the Tree Protection Plan or Site Plan as a minimum tree protection zone (TPZ). No storage of materials or fill is permitted within the TPZ. No movement or storage of materials or fill is permitted within the TPZ. The TPZ shall be maintained at all times.
- All additional tree protection or preservation equipment, above and beyond the installation of the protection barriers, must be undertaken or implemented as indicated in the Urban Forestry approved report and under the approval of Urban Forestry.
- If the minimum tree protection zone (TPZ) must be reduced to facilitate construction access, the protection barriers must be maintained at a lesser distance and the exposed portion of TPZ must be protected using a hatched area denoting location of temporary loading construction for the use of materials. SEE DRAWINGS PREPARED AT FOR OFFICIALS. REFER ALSO TO TRANSPORTATION CONSIDERATION REPORT.
- Any tools or equipment indicated on this plan which require permits, as approved by Urban Forestry, must be provided. Roads that have received approval from Urban Forestry to be provided must be equipped with proper signage and lighting. The applicant must ensure that the proposed work does not interfere with the proper functioning of the road.
- The applicant shall provide all in-situ regulated trees in the area of construction that have not been approved for removal through development works to the satisfaction of Urban Forestry.
- Conditions of offences regarding the regulations in the Street Tree By-Law and Private Tree By-Law are subject to the provisions of the Ontario Environmental Protection Act, R.S.O. 1990, c. 19, s. 127(1) and the Environmental Protection Act, R.S.O. 1990, c. 19, s. 127(2).
- The owner must ensure that the work is in accordance with the Migratory Bird Conventions Act and that no regulatory bird nests will be impacted by the proposed work no less than 48 hours prior to conducting any specified work.

No.	Issue/Revisions	Date	By
1	Report Submission	1 Nov. 18	KH
2	Report Revisions	13 Feb. 19	KH

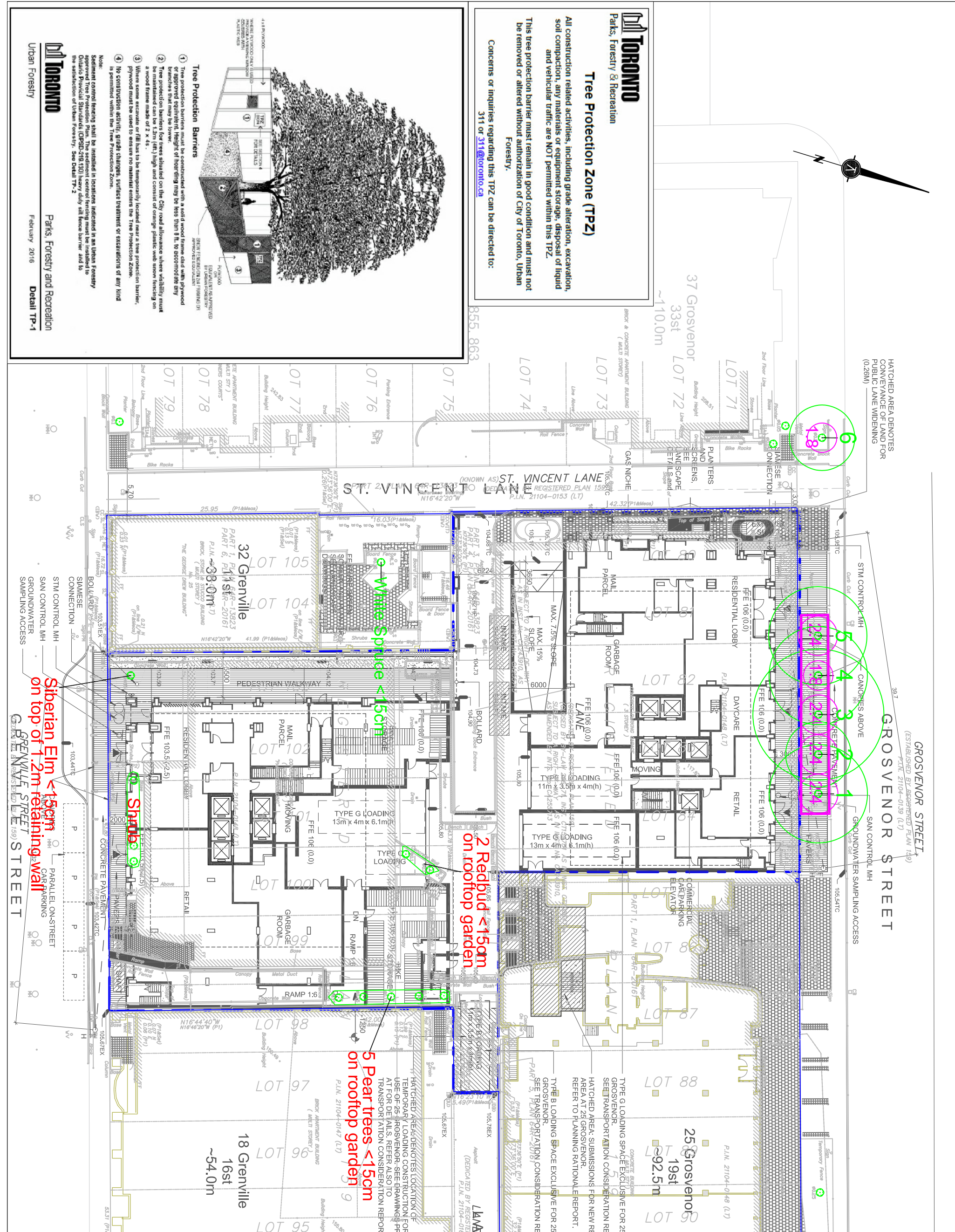
Base Data: Spight, van Norderd & Gibson Ltd. (top); Sweeney & Co Architects Inc. (Site plan)

KUNTZ FORESTRY CONSULTING INC.
 146 Lakeshore Road West
 P.O. Box 1247 Lakeshore W/O
 L2S 8J7, Ontario, ON L8K 0S3
 1-288-837-8171 / 905-889-8399
 www.kuntzforestry.ca

Terraplan Landscape Architects
 20 Champlain Boulevard, Suite 102
 Toronto, ON M3H 2Z1

Project: P1933
 Date: 1 November 2018
 Scale: 1:400

Existing Conditions, Proposed Site Plan
 Tree Inventory & Preservation Plan
 Figure 1



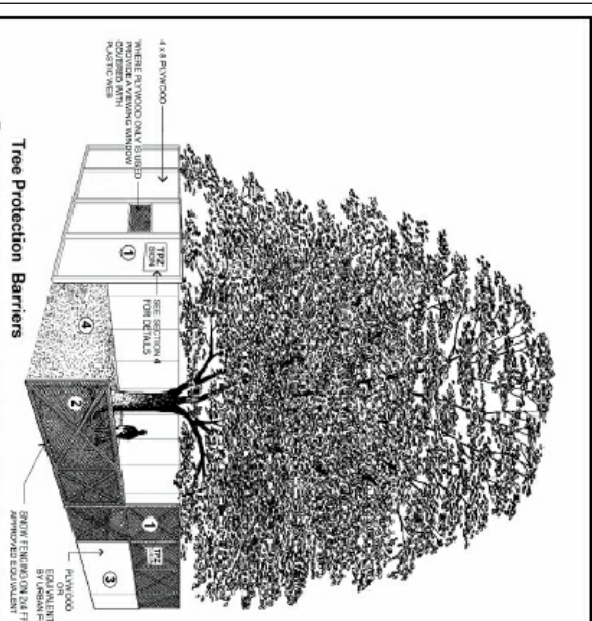
Toronto Parks, Forestry & Recreation

Tree Protection Zone (TPZ)

All construction related activities, including grade alteration, excavation, soil compaction, any materials or equipment storage, disposal of liquid and vehicular traffic are NOT permitted within this TPZ.

This tree protection barrier must remain in good condition and must not be removed or altered without authorization of City of Toronto, Urban Forestry.

Concerns or inquiries regarding this TPZ can be directed to:
 311 or 311@toronto.ca



Toronto Parks, Forestry and Recreation
 February 2016 Detail TP-1

Tree Protection Barriers

- Tree protection barriers must be constructed with a solid wood frame clad with plywood or approved equivalent. Height of hoarding may be less than 8 ft. to accommodate dry branches that may be blown.
- Tree protection barriers for trees situated on the City road allowance where visibility must be maintained shall be constructed with a solid wood frame clad with plywood or approved equivalent. Height of hoarding may be less than 8 ft. to accommodate dry branches that may be blown.
- Where some excavate or fill has to be temporarily located near a tree protection barrier, plywood must be used to ensure no material enters the Tree Protection Zone.
- No construction activity, grade changes, surface treatment or excavations of any kind is permitted within the Tree Protection Zone.

Note:
 Sediment control fencing shall be installed in locations indicated in an Urban Forestry approved Tree Protection Plan. The sediment control fencing must be installed to Ontario Provincial Standard (OPS) 219, 130 heavy duty self fence barrier and to the satisfaction of Urban Forestry. See Detail TP-2.